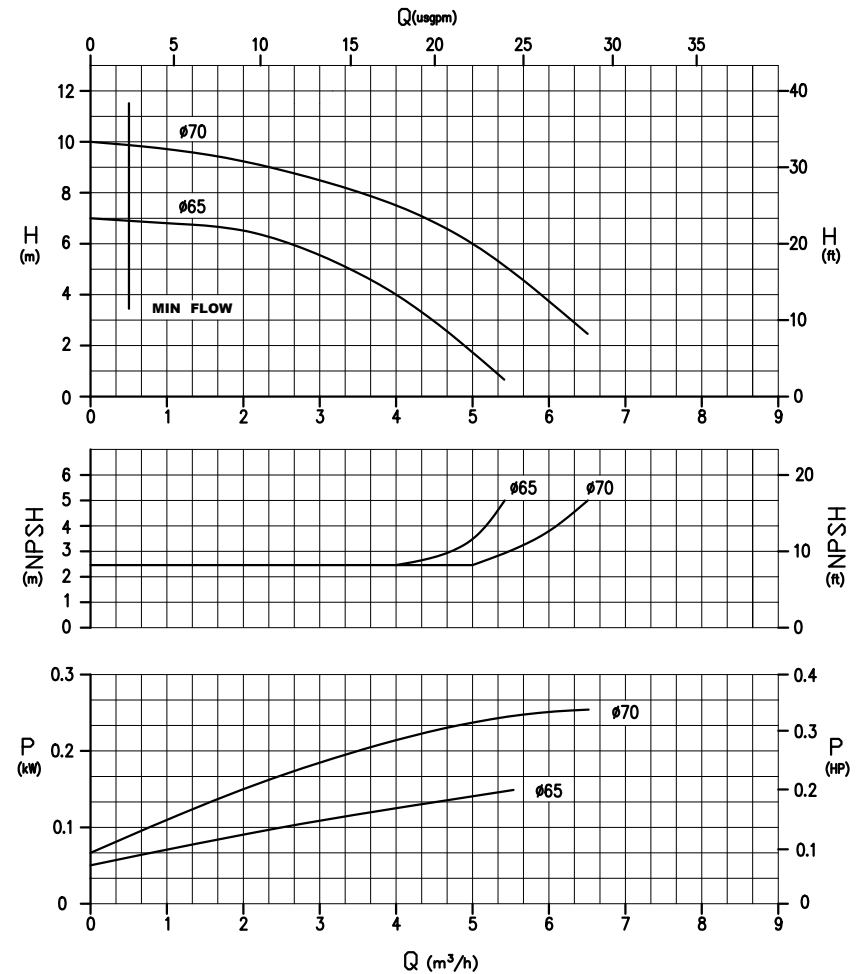


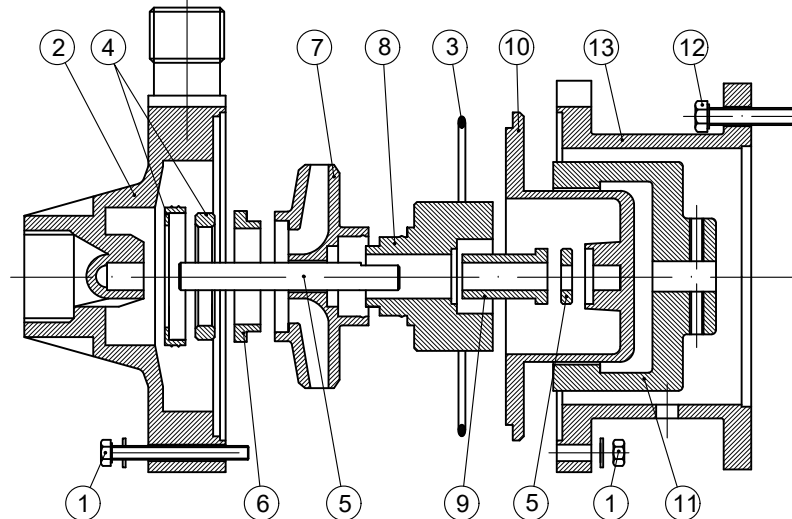
FEATURES/CARATTERISTICHE

Materials available/Materiali disponibili: PP;PVDF
 Max flow/Portata massima: 6.5 m³/h
 Max head/Prevalenza massima: 10 m
 Max temperature/Temperatura massima: PP 60°C;PVDF 90°C
 Max viscosity/Viscosità massima: 200 cSt
 Pressure rating/Pressione nominale massima: NP/PN 6 @ 20°C
 Pump weight/Peso pompa: PP:1.6 kg; PVDF:1.8 kg
 Motor weight/Peso motore (approx.): 0.25 kW: 4.4 kg
 Note: absorbed power is relevant to liquids with s.g. = 1

CURVES/CURVE 60HZ-3500 RPM



SECTION AND PARTS LIST/SEZIONE E LISTA PARTI

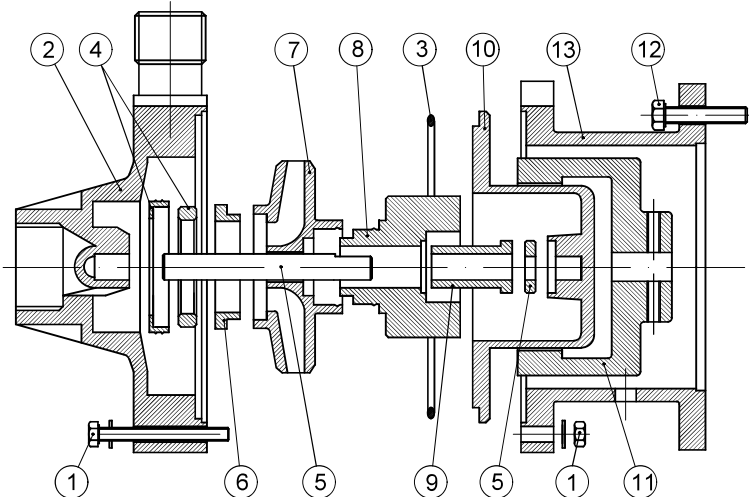


POS.	1	2	3	4	5	6	7	8	9	10	11	12	13
PART DESCR.	SET SCREWS	FRONT CASING	O-RING	CASING THRUST BUSH	SHAFT + RING	IMPELLER THRUST BEARING	IMPELLER	INT. MAGNET	BEARING	REAR CASING	EXT. MAGNET	SET SCREWS	BRACKET
MATERIALS	ALSI304	PP+GF PVDF+CF	EPDM VITON	Al ₂ O ₃ EPDM VITON	Al ₂ O ₃	PTFEC	PP PVDF	PP PVDF NdFeB	PTFEC	PP+GF PVDF+CF	C40 NdFeB	ALSI304	PP

FEATURES/CARATTERISTICHE

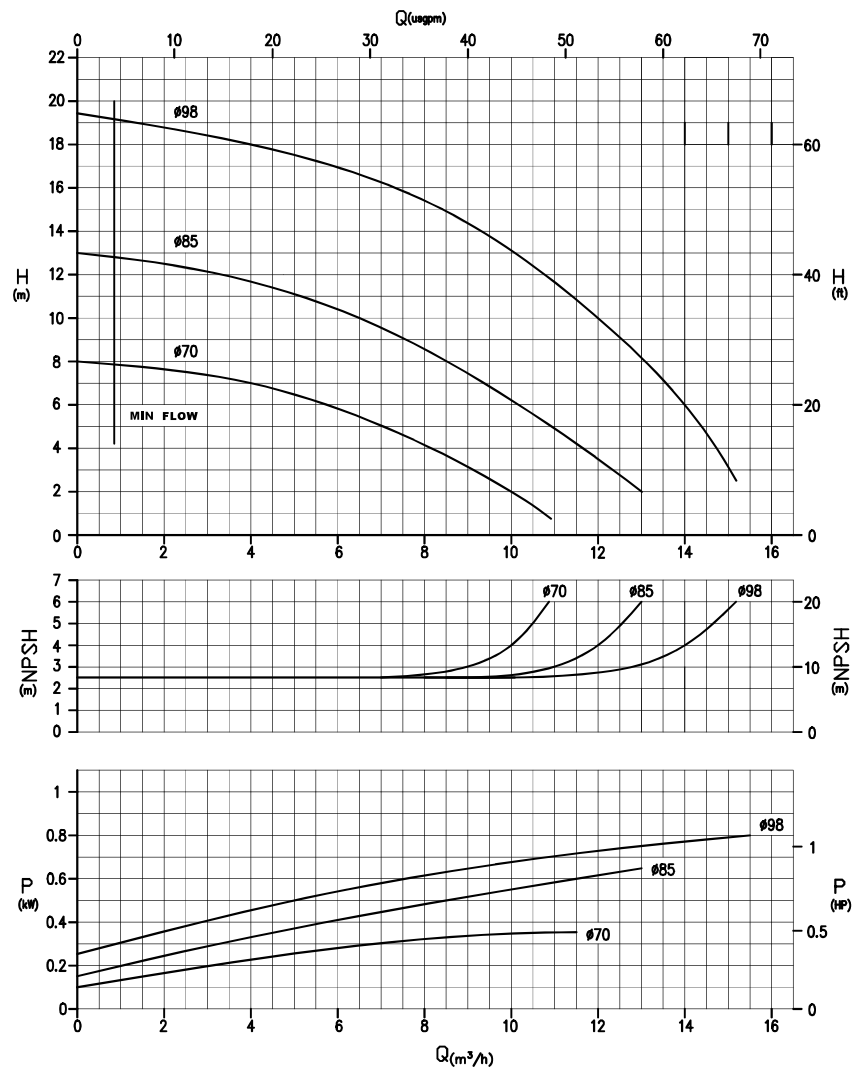
Materials available/Materiali disponibili: PP;PVDF
 Max flow/Portata massima: 15 m³/h
 Max head/Prevalenza massima: 19 m
 Max temperature/Temperatura massima: PP 60°C;PVDF 90°C
 Max viscosity/Viscosità massima: 200 cSt
 Pressure rating/Pressione nominale massima: NP/PN 6 @ 20°C
 Pump weight/Peso pompa: PP: 2.6 kg;PVDF: 2.9 kg
 Motor weight/Peso motore (approx.): 0.55 kW: 8.8 kg
 1.1 kW: 13 kg
 Note: absorbed power is relevant to liquids with s.g. = 1

SECTION AND PARTS LIST/SEZIONE E LISTA PARTI



POS.	1	2	3	4	5	6	7	8	9	10	11	12	13
PART DESCR.	SET SCREWS	FRONT CASING	O-RING	CASING THRUST BUSH	SHAFT RING	IMPELLER THRUST BEARING	IMPELLER	INT. MAGNET	BEARING	REAR CASING	EXT. MAGNET	SET SCREWS	BRACKET
MATERIALS	AISI304	PP+GF PVDF+CF	EPDM VITON	Al ₂ O ₃ EPDM VITON	Al ₂ O ₃	PTFEC	PP PVDF	PP PVDF NdFeB	PTFEC	PP+GF PVDF+CF	C40 NdFeB	AISI304	PP

CURVES/CURVE 60HZ-3500 RPM

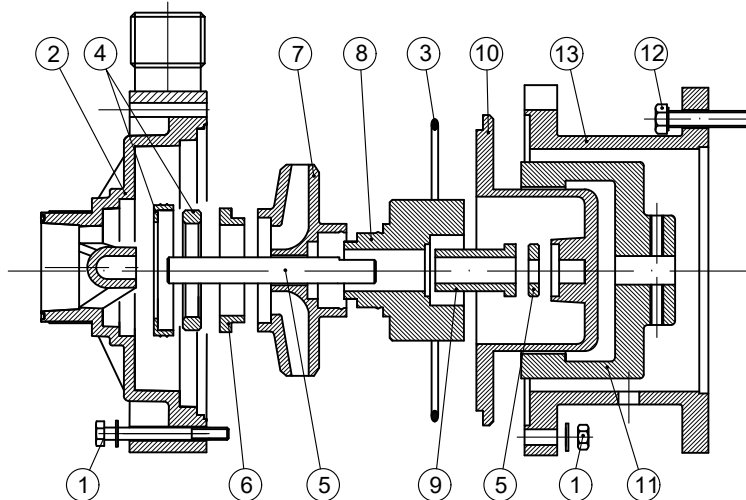


FEATURES/CARATTERISTICHE

Materials available/Materiali disponibili:	PP;PVDF
Max flow/Portata massima:	26 m ³ /h
Max head/Prevalenza massima:	29 m
Max temperature/Temperatura massima:	PP 60°C;PVDF 90°C
Max viscosity/Viscosità massima:	200 cSt
Pressure rating/Pressione nominale massima:	NP/PN 6 @ 20°C
Pump weight/Peso pompa:	PP: 5.8 kg;PVDF: 6.6 kg
Motor weight/Peso motore (approx.):	1.1 kW: 13 kg 1.5 kW: 13 kg 2.2 kW: 13 kg

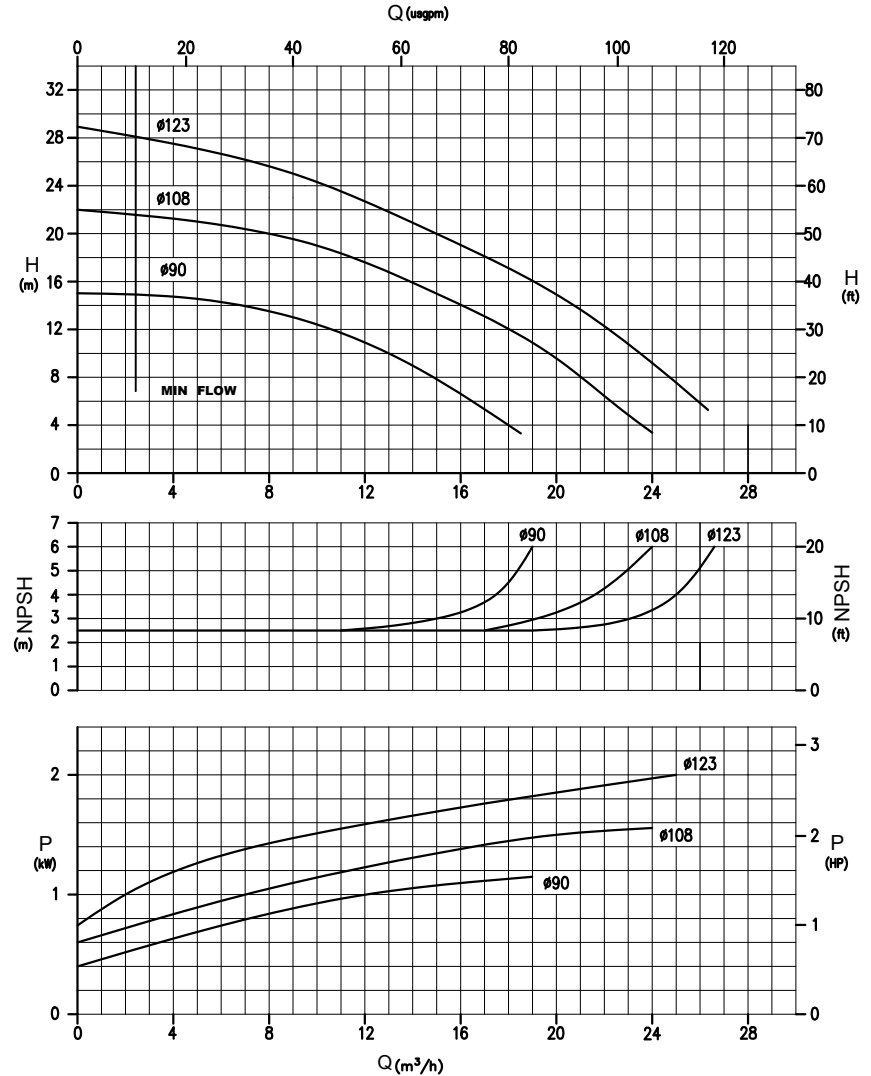
Note: absorbed power is relevant to liquids with s.g. = 1

SECTION AND PARTS LIST/SEZIONE E LISTA PARTI



POS.	1	2	3	4	5	6	7	8	9	10	11	12	13
PART DESCR.	SET SCREWS	FRONT CASING	O-RING	CASING THRUST BUSH	SHAFT + THRUST RING	IMPELLER THRUST BEARING	IMPELLER	INT. MAGNET	BEARING	REAR CASING	EXT. MAGNET	SET SCREWS	BRACKET
MATERIALS	ALSI304	PP PVDF	EPDM VITON	Al ₂ O ₃ EPDM VITON	Al ₂ O ₃	PTFEC	PP PVDF	PP PVDF NdFeB	PTFEC	PP PVDF	C40 NdFeB	ALSI304	PP

CURVES/CURVE 60HZ-3500 RPM



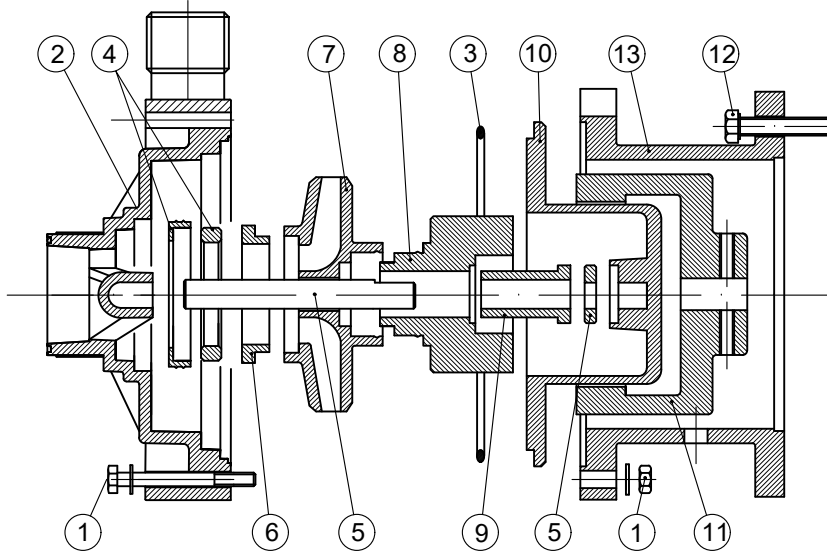
All data stated are an indication and are liable to change without notice / Tutti i dati sono indicativi e possono variare senza preavviso

FEATURES/CARATTERISTICHE

Materials available/Materiali disponibili:	PP;PVDF
Max flow/Portata massima:	40 m ³ /h
Max head/Prevalenza massima:	34.5 m
Max temperature/Temperatura massima:	PP 60°C;PVDF 90°C
Max viscosity/Viscosità massima:	200 cSt
Pressure rating/Pressione nominale massima:	NP/PN 6 @ 20°C
Pump weight/Peso pompa:	PP: 8.0 kg;PVDF: 8.6 kg
Motor weight/Peso motore (approx.):	2.2 kW: 13 kg 3.0 kW: 23 kg 4.0 kW: 31 kg

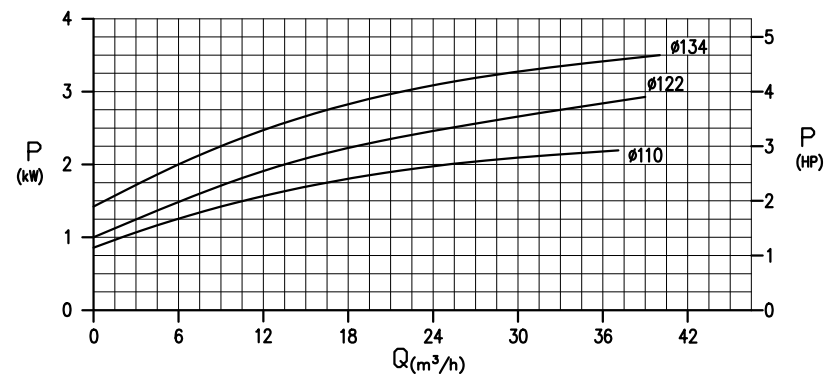
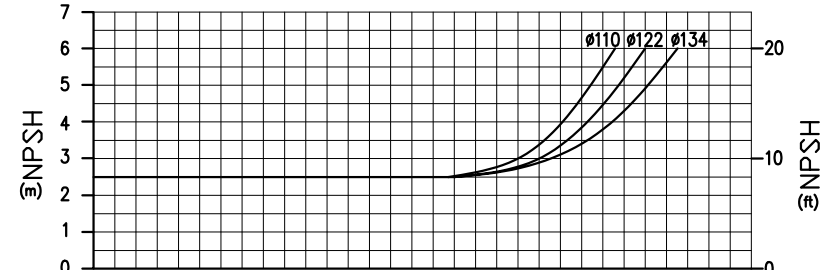
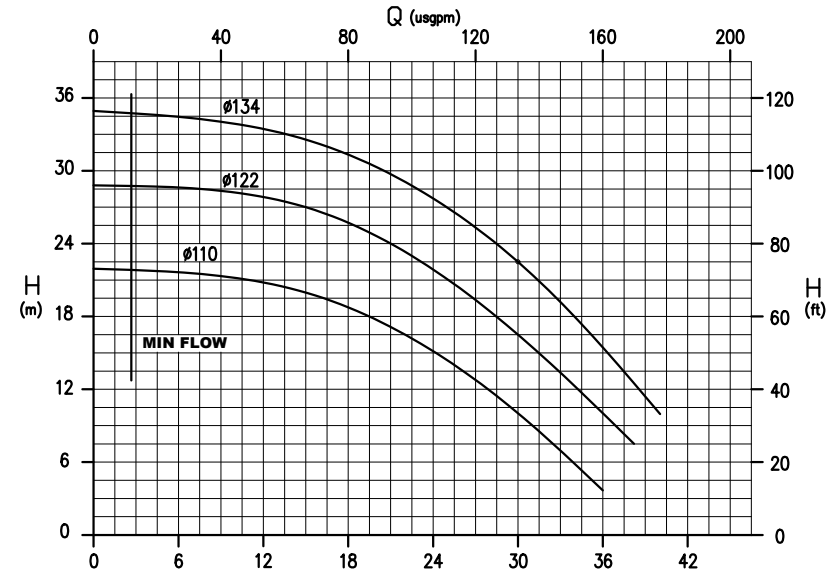
Note: absorbed power is relevant to liquids with s.g. = 1

SECTION AND PARTS LIST/SEZIONE E LISTA PARTI



POS.	1	2	3	4	5	6	7	8	9	10	11	12	13
PART DESCR.	SET SCREWS	FRONT CASING	O-RING	CASING THRUST BUSH	SHAFT+RING	IMPELLER THRUST BEARING	IMPELLER	INT. MAGNET	BEARING	REAR CASING	EXT. MAGNET	SET SCREWS	BRACKET
MATERIALS	AI304	PP+GF PVDF+CF	EPDM VITON	Al ₂ O ₃ EPDM VITON	Al ₂ O ₃	PTFEC	PP PVDF	PP PVDF NdFeB	PTFEC	PP+GF PVDF+CF	C40 NdFeB	AI304	PP

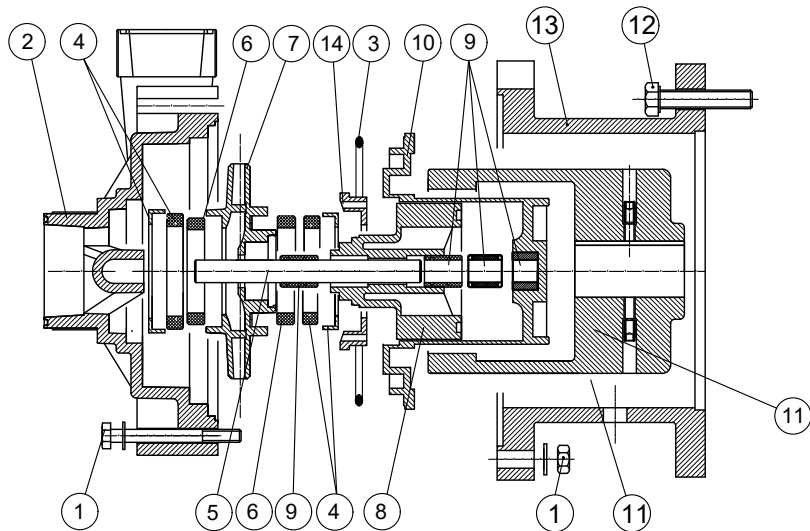
CURVES/CURVE 60HZ-3500 RPM



FEATURES/CARATTERISTICHE

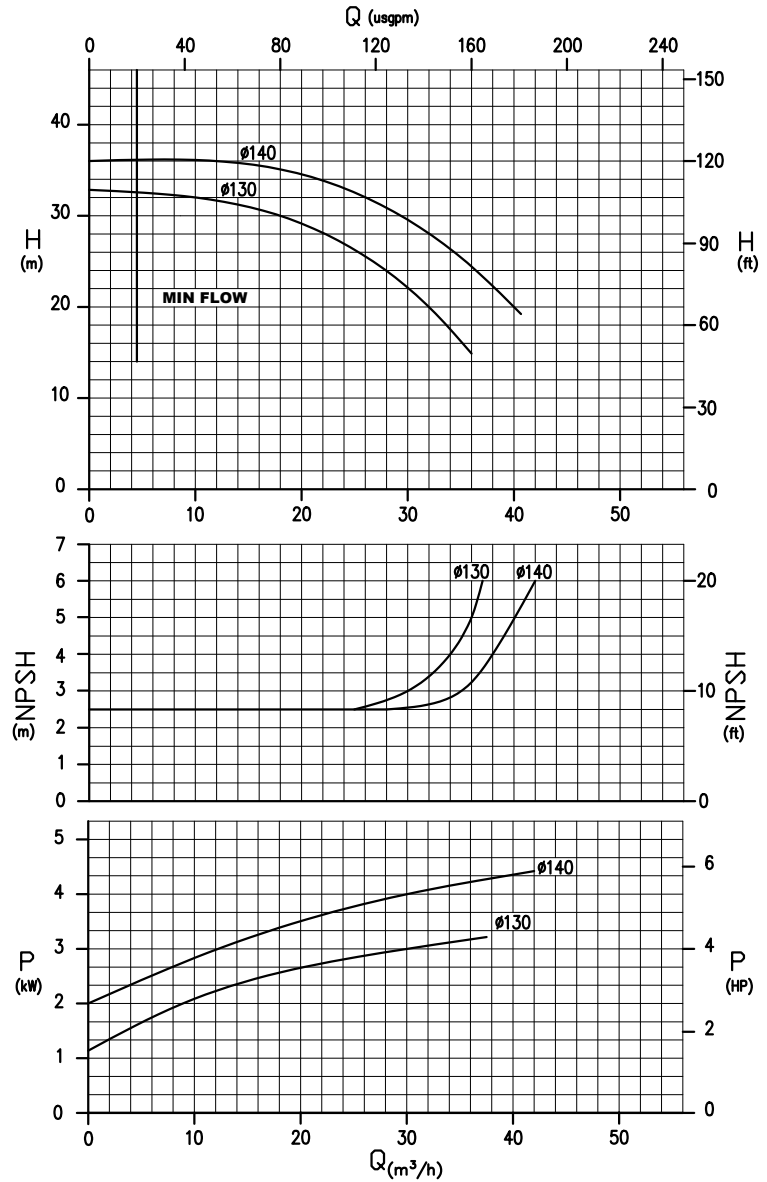
Materials available/Materiali disponibili: PP; PVDF
 Max flow/Portata massima: 41 m³/h
 Max head/Prevalenza massima: 36 m
 Max temperature/Temperatura massima: PP 60°C; PVDF 90°C
 Max viscosity/Viscosità massima: 200 cSt
 Pressure rating/Pressione nominale massima: NP/PN 6 @ 20°C
 Pump weight/Peso pompa: PP: 19.7 Kg; PVDF: 21.3Kg
 Motor weight/Peso motore (approx.): 3.0 kW: 23 Kg
 4.0 kW: 31 Kg
 Note: absorbed power is relevant to liquids with s.g. = 1

SECTION AND PARTS LIST/SEZIONE E LISTA PARTI



POS.	1	2	3	4	5	6	7	8	9	10	11	12	13
PART DESCR.	SET SCREWS	FRONT CASING	O-RING	CASING THRUST BUSH	SHAFT+RING	IMPELLER THRUST BEARING	IMPELLER	INT. MAGNET	BEARING	REAR CASING	EXT. MAGNET	SET SCREWS	BRACKET
MATERIALS	AISI304	PP+GF PVDF+CF	EPDM VITON	Al2O3 EPDM VITON	Al2O3	PTFEC	PP PVDF	PP PVDF NdFeB	PTFEC	PP+GF PVDF+CF	C40 NdFeB	AISI304	PP

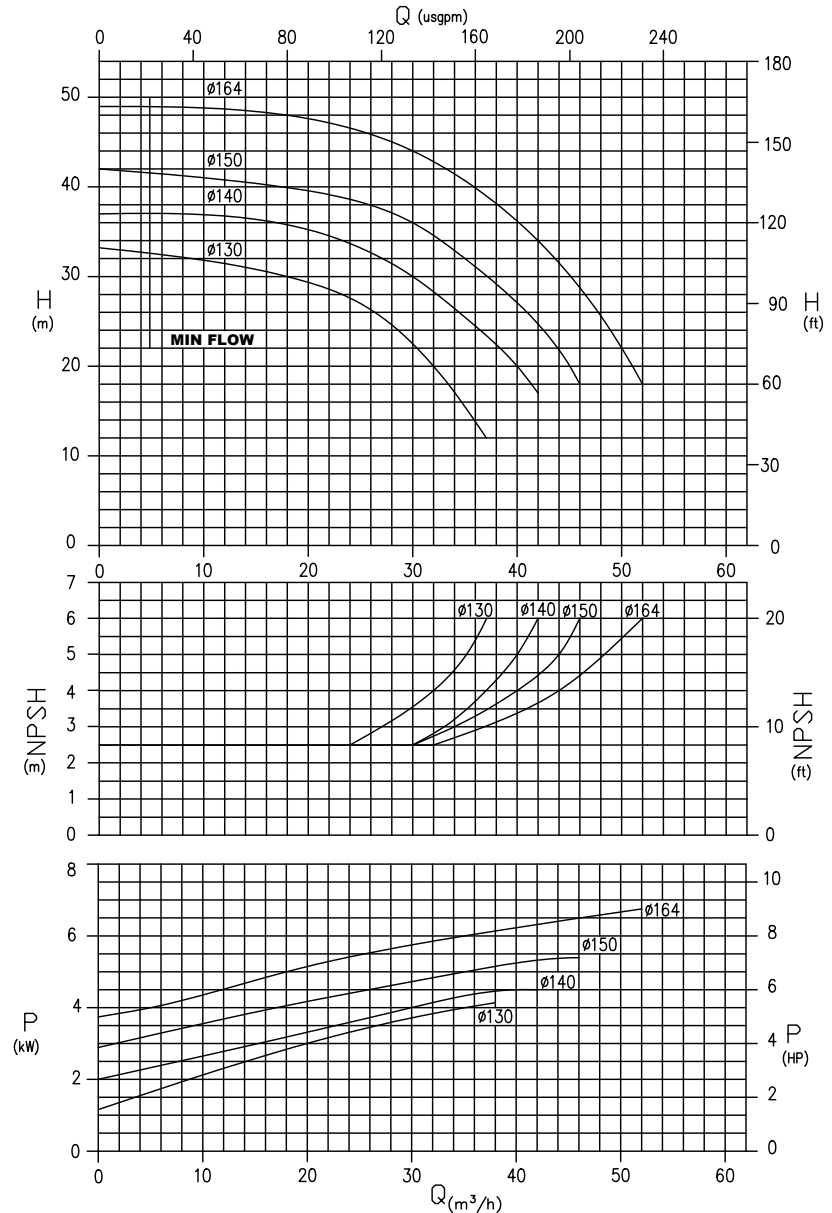
CURVES/CURVE 60HZ-3500 RPM



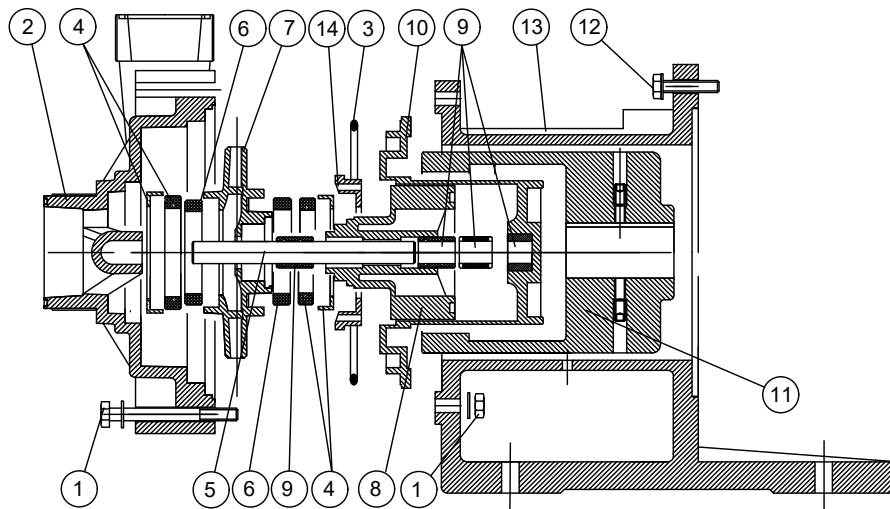
FEATURES/CARATTERISTICHE

Materials available/Materiali disponibili:	PP; PVDF
Max flow/Portata massima:	51.5 m ³ /h
Max head/Prevalenza massima:	48 m
Max temperature/Temperatura massima:	PP 60°C; PVDF 90°C
Max viscosity/Viscosità massima:	200 cSt
Pressure rating/Pressione nominale massima:	NP/PN 6 @ 20°C
Pump weight/Peso pompa:	PP: 32.2 kg; PVDF: 35 kg
Motor weight/Peso motore (approx.):	5.5 kW: 39 kg 7.5 kW: 39 kg
Note:	absorbed power is relevant to liquids with s.g. = 1

CURVES/CURVE 60HZ-3500 RPM



SECTION AND PARTS LIST/SEZIONE E LISTA PARTI

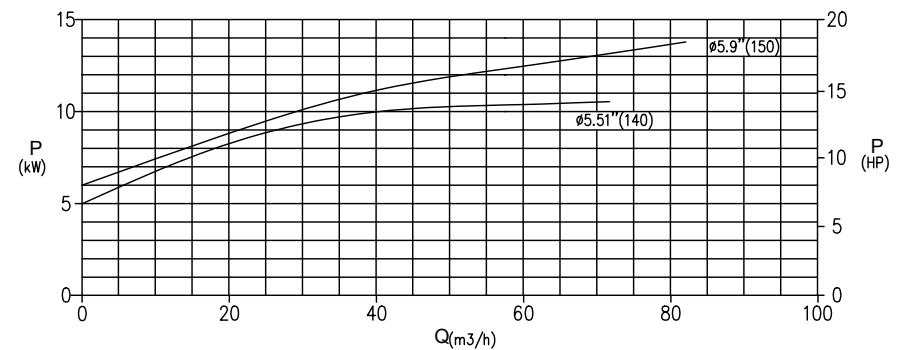
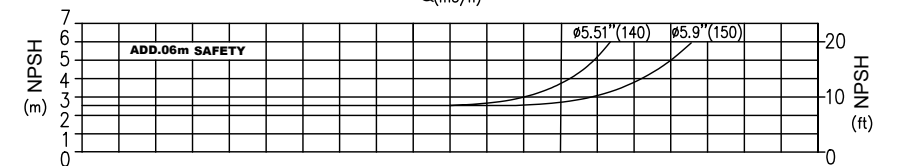
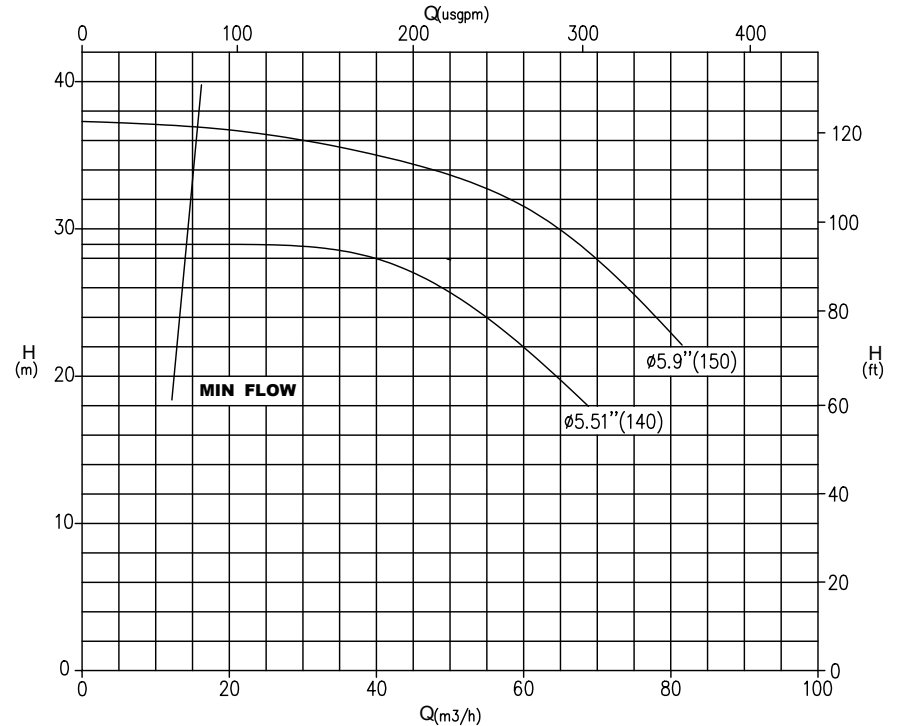


POS.	1	2	3	4	5	6	7	8	9	10	11	12	13	14
PART DESCR.	SET SCREWS	PUMP HEAD	O-RING	CASING THRUST BUSH	SHAFT+RING	IMPELLER THRUST BEARING	IMPELLER	INT. MAGNET	BEARING	REAR CASING	EXT. MAGNET	SET SCREWS	BRACKET	REAR SUPPORT
MATERIALS	ALSI304	PP+GF PVDF+CF	EPDM VITON	Al ₂ O ₃ EPDM VITON	Al ₂ O ₃	PTFEC	PP PVDF	PP PVDF NdFeB	PTFEC	PP+GF PVDF+CF	C40 NdFeB	ALSI304	ALUMINUM	PP PVDF

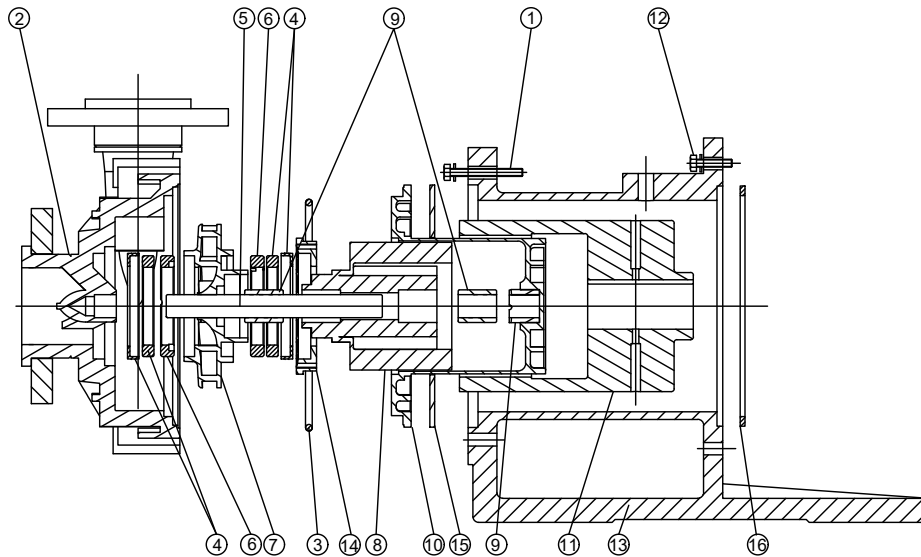
FEATURES/CARATTERISTICHE

Materials available/Materiali disponibili: PP+GF; PVDF+CF
 Max flow/Portata massima: 80 m³/h; 352 usgpm
 Max head/Prevalenza massima: 37.5 m; 123 ft
 Max temperature/Temperatura massima: PP 60°C; PVDF 90°C
 Max viscosity/Viscosità massima: 200 cSt
 Pressure rating/Pressione nominale massima: NP/PN 6 @ 20°C
 Pump weight/Peso pompa: PP: 93 lbs; PVDF: 97 lbs
 Motor weight/Peso motore (approx.): 15 HP: 270 lbs;
 20 HP: 295 lbs;
 25 HP: 360 lbs

CURVES/CURVE 60HZ-3500 RPM



SECTION AND PARTS LIST/SEZIONE E LISTA PARTI



POS.	1	2	3	4	5	6	7	8	9	10	11	12	13	14	15	16*
PART DESCR.	SET SCREWS	PUMP HEAD	O-RING	CASING THRUST BUSH	SHAFT	IMPELLER THRUST BEARING	IMPELLER	INT. MAGNET	BEARING	REAR CASING	EXT. MAGNET	SET SCREWS	BRACKET	REAR SUPPORT	RING	RING
MATERIALS	AISI304	PP+GF PVDF+CF	EPDM VITON	Al ₂ O ₃ EPDM VITON	Al ₂ O ₃	PTFEC	PP PVDF	PP PVDF NdFeB	PTFEC	PP+GF PVDF+CF	CS NdFeB	AISI304	Cast Iron Aluminium	PP PVDF	AISI 304 AISI 316	AISI 304 AISI 316

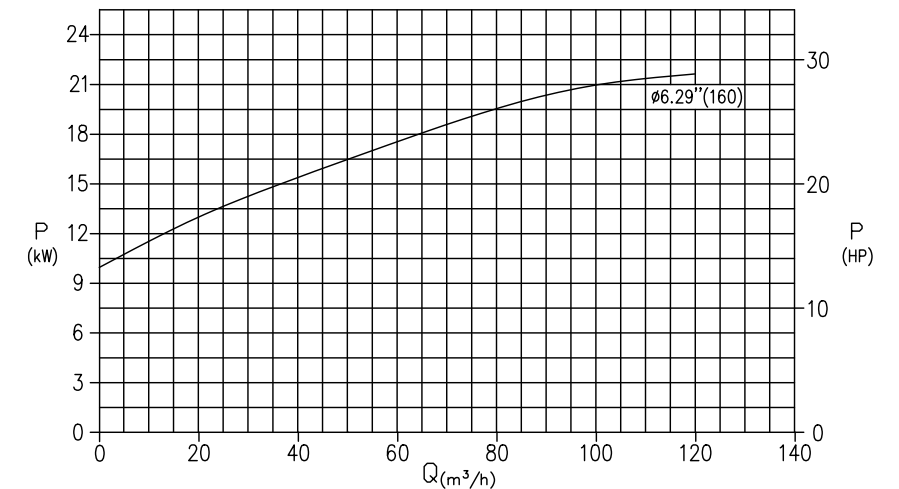
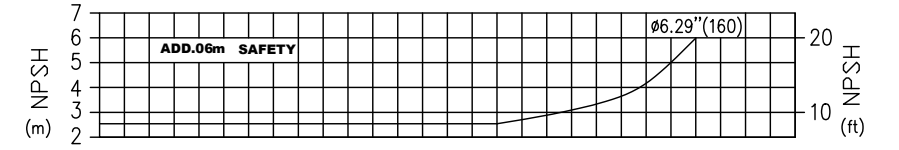
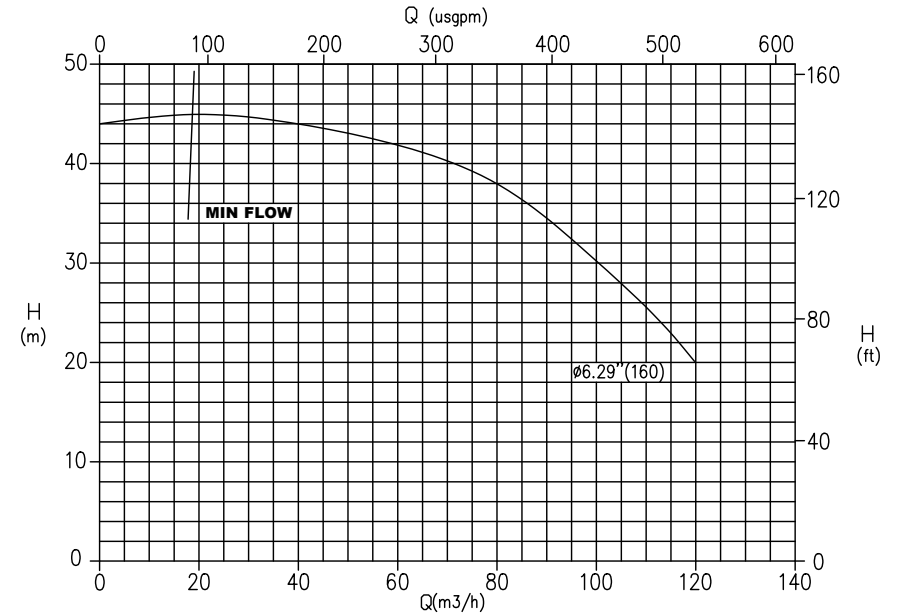
* Only for motors GR.132

All data stated are an indication and are liable to change without notice / Tutti i dati sono indicativi e possono variare senza preavviso

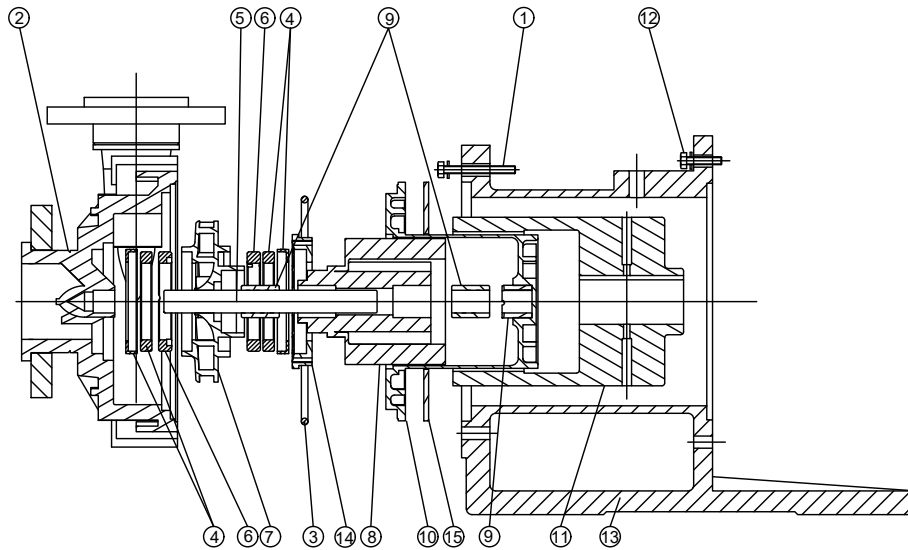
FEATURES/CARATTERISTICHE

Materials available/Materiali disponibili:	PP+GF;PVDF+CF
Max flow/Portata massima:	120 m ³ /h; 528 usgpm
Max head/Prevalenza massima:	45 m; 148 ft
Max temperature/Temperatura massima:	PP 60°C;PVDF 90°C
Max viscosity/Viscosità massima:	200 cSt
Pressure rating/Pressione nominale massima:	NP/PN 6 @ 20°C
Pump weight/Peso pompa:	PP: 88 lbs;PVDF: 99lbs
Motor weight/Peso motore (approx.):	30 HP: 420 lbs.

CURVES/CURVE 60HZ-3500 RPM



SECTION AND PARTS LIST/SEZIONE E LISTA PARTI



POS.	1	2	3	4	5	6	7	8	9	10	11	12	13	14	15
PART DESCR.	SET SCREWS	PUMP HEAD	O-RING	CASING THRUST BUSH	SHAFT	IMPELLER THRUST BEARING	IMPELLER	INT. MAGNET	BEARING	REAR CASING	EXT. MAGNET	SET SCREWS	BRACKET	REAR SUPPORT	RING
MATERIALS	AISI304	PP+GF PVDF+CF	EPDM VITON	Al ₂ O ₃ EPDM VITON	Al ₂ O ₃	PTFEC	PP PVDF NdFeB	PP PVDF NdFeB	PTFEC	PP+CF PVDF+GF	CS NdFeB	AISI304	Cast Iron Aluminium	PP PVDF	AISI 304 AISI 316

All data stated are an indication and are liable to change without notice / Tutti i dati sono indicativi e possono variare senza preavviso